



# READINESS CHECK

TOEFL ITP  
ONLINE

---

Readiness Check 5.5

Updated : 21 Januari 2025



# PERANGKAT UJIAN

- Laptop / PC berbasis Windows 10 / Windows 11 atau Mac OS X 10 . 14 (Mojave)
- Microsoft Edge Browser atau Chrome (untuk Macbook)
- Mematikan / uninstall antivirus (Smadav, avira, Kaspersky, mcafee, dll.)
- Internet Service Provider (ISP) apapun.

# Cara melakukan Check Readiness



Microsoft Edge

1. Silahkan membuka Microsoft Edge (Windows) / Chrome (Macbook) pada laptop/PC anda
2. Microsoft Edge / Chrome dapat dicari di **Search** bar.
3. Buka [Program Workshop](#)

Link Program Workshop :

<https://www.programworkshop.com/pw2/core/4.0/Login/Login/Home?sk=382>

Klik **Menu Check Readiness** pada bagian pojok kanan website

A screenshot of the ETS Program Administration website. At the top left is the ETS logo and the text 'Program Administration'. At the top right, there is a navigation menu with three items: 'Check Readiness' (highlighted with a red arrow), 'Download Secure Browser', and 'Frequently Asked Questions'. Below the navigation menu is a login form with fields for 'Username' and 'Password', a 'Login' button, and a link for 'Forgot Your Password?'. To the right of the login form is a section titled 'The TOEFL® Family of Assessments' which lists three types of tests: 'The TOEFL ITP® Tests' (for university level), 'The TOEFL Junior® Tests' (for middle school to early high school level), and 'The TOEFL® Primary™ Tests' (for young students).

1. Klik **"RUN SYSTEM CHECK"** pada bagian kiri website


Check Readiness

Currently identified as: **Anonymous**

[Change](#)

### System Check

Run the System Check to identify potential issues with this device or Internet connection. This check also verifies this device meets the minimum system requirements needed to run the test.

 [Run System Check](#)

### Evaluate Network

Launch the Test Simulation on multiple devices at the same time to simulate the network traffic of several test takers at your institution. We recommend coordinating the verification process with your IT staff so they can monitor network performance during the exercise.

[Run Test Simulation](#)

### Advanced Readiness and Troubleshooting

<a href="#">Test Delivery Check</a>	Run the Test Delivery Check to take a test. This test includes samples of each question type to verify this device will deliver the test.
<a href="#">Bandwidth Check</a>	Run the Bandwidth Check to sample your Internet connection speeds over a period of time to see how your available bandwidth fluctuates throughout the day.

### System Check

Currently identified as: Anonymous

[Change](#)

The System Check tests your device to make sure it meets the minimum requirements for test delivery. At the completion of the check, you will be provided with information regarding the specific device used and current internet connection information and possibly a list of potential issues that need to be corrected prior to testing.

#### System Check Information

Run the System Check on all devices used for testing. For best results, close any applications that may be running on this device as well as any additional browser windows or tabs that may be open.

First and Last Name:

Comments:

[Run Check](#)



Silahkan tekan  
"Run Check"



This device meets all site requirements, but may need attention. A Secure Browser may be required for delivery of the operational test. If needed, be sure to install the Secure Browser on the device prior to the test.

**Additional Information**

Institution	Anonymous
wan ip Address	.....
Date/Time of Report (Local)	04/25/2020 12:44:42
Date/Time of Report (Server)	04/25/2020 12:45:50
Country	ID
Display Resolution	1280 x 720
Display Colors	24 - bit
Browser	Internet Explorer
Browser Version	11.0
Platform	Windows 8.1
Cookies	Supported
Compression	Supported
HTTP Latency	798 ms
User Agent String	Mozilla/5.0 (Windows NT 6.3; WOW64; Trident/7.0; rv:11.0) like Gecko
System Language	id-ID
Download Speed	2 Mbps (208 KB/s)
Upload Speed	3 Mbps (335 KB/s)
Traceroute	The traceroute could not be completed successfully. If the upload and download checks have also failed then please contact support, otherwise this should not have an impact on testing.  NOTE: The traceroute works by sending a packet of data from our server to the WANIP currently identified for this device, one hop at a time. At each hop, a response is returned so that we know the packet has successfully arrived at its destination. A common cause of this check failing is that a router has not been configured to send a response when the packet of data has been received, which could be for a variety of reasons including to increase performance.
HTTP Protocol	HTTP/1.1
Mime Types	application/x-shockwave-flash, application/futuresplash
Number of Checks	13
Number of Checks Passed	10
Number of Checks Warned	3

Setelah selesai, hasil ini akan muncul di layar anda.

Silahkan difoto dan diberikan kepada **konsultan kami.**

Kemudian, pilih "RETURN"

### Check Readiness

Currently identified as: **Anonymous**

[Change](#)

#### System Check

Run the System Check to identify potential issues with this device or Internet connection. This check also verifies this device meets the minimum system requirements needed to run the test.

[Run System Check](#)

#### Evaluate Network

Launch the Test Simulation on multiple devices at the same time to simulate the network traffic of several test takers at your institution. We recommend coordinating the verification process with your IT staff so they can monitor network performance during the exercise.

[Run Test Simulation](#)

#### Advanced Readiness and Troubleshooting

[Test Delivery Check](#)

Run the Test Delivery Check to take a test. This test includes samples of each question type to verify this device will deliver the test.

[Bandwidth Check](#)

Run the Bandwidth Check to sample your Internet connection speeds over a period of time to see how your available bandwidth fluctuates throughout the day.

Pilih

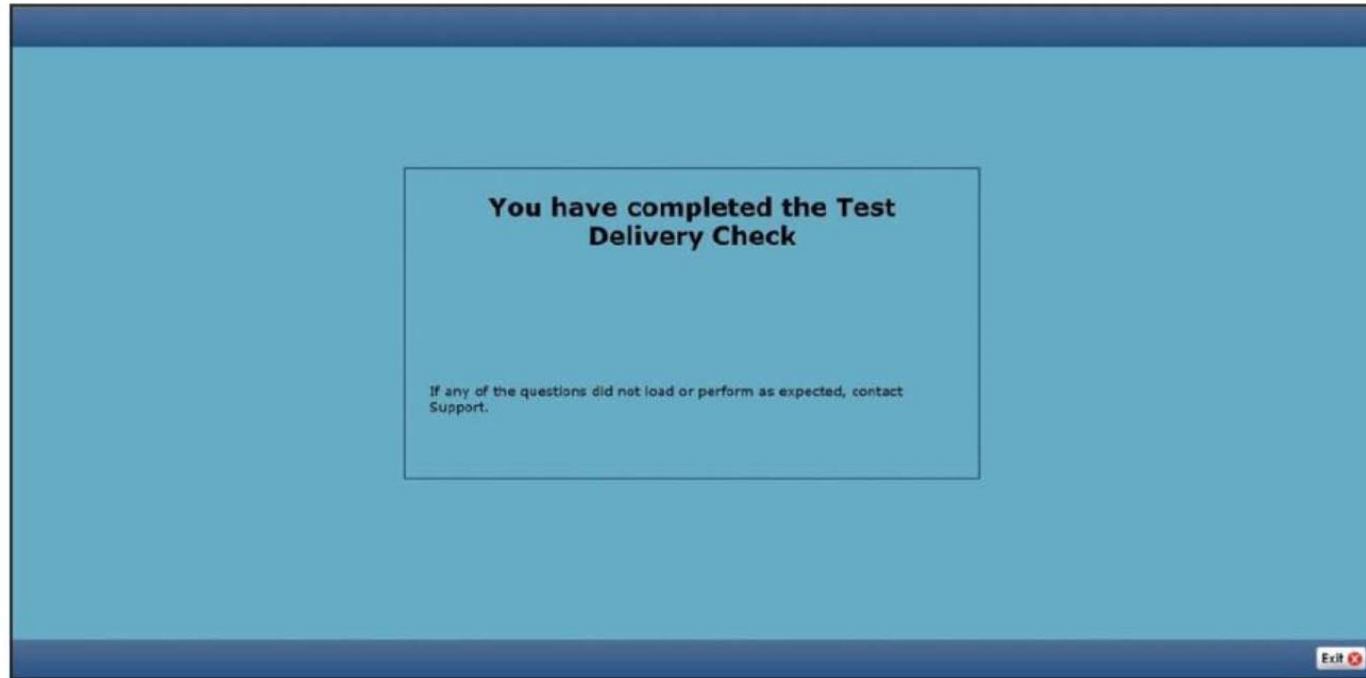
“Test Delivery Check”

## Welcome to the Test Delivery Check

The Test Delivery Check steps you through a series of different questions to ensure all formats used for testing work properly on your device. If any of the questions do not load or perform as expected, contact Support.

Next 

Silahkan klik Next dan dengarkan Test Delivery Check hingga selesai.



Setelah selesai akan keluar hasil seperti ini, silahkan difoto dan diberikan ke **konsultan kami.**

Lalu diklik "Exit"

## Check Readiness

Currently identified as: **Anonymous**

[Change](#)

### System Check

Run the System Check to identify potential issues with this device or Internet connection. This check also verifies this device meets the minimum system requirements needed to run the test.

[Run System Check](#)

### Evaluate Network

Launch the Test Simulation on multiple devices at the same time to simulate the network traffic of several test takers at your institution. We recommend coordinating the verification process with your IT staff so they can monitor network performance during the exercise.

[Run Test Simulation](#)

### Advanced Readiness and Troubleshooting

[Test Delivery Check](#)

Run the Test Delivery Check to take a test. This test includes samples of each question type to verify this device will deliver the test.

[Bandwidth Check](#)

Run the Bandwidth Check to sample your Internet connection speeds over a period of time to see how your available bandwidth fluctuates throughout the day.



Pilih

“Bandwidth Check”

## Bandwidth Check

Currently identified as: **Anonymous**

[Change](#)

### **Bandwidth Check Information**

The Bandwidth Check tests your network's ability to transfer data to and from our servers using a series of checks spaced 15 minutes apart to provide a view of how the network is performing. This does not check the bandwidth of your ISP like other speed tests you will find online, but rather simulates how data will be transferred during a test.

Duration:

One time check

Comments:

[Run Bandwidth Check](#)



Mohon perhatikan!

1. Duration dipilih  
**"One time check"**
2. Baru klik  
**"Run Bandwidth Check"**

Bandwidth Check: Complete

WAN IP :

Institution: **Anonymous**

Run the Bandwidth Check during days and times when testing will occur to accurately determine if your site can handle the data load experienced during a test. For best results, close any applications running on this device, as well as additional browser windows or tabs.

Warning: The Bandwidth Check will be paused if this device enters power save mode.

The bandwidth check has ended.

Please review the History page to view the detailed results.

[View Detailed Results](#)

[Exit](#)



Setelah selesai loading, klik "View Detailed Results", Kemudian hasilnya silahkan difoto dan dikirimkan ke **konsultan kami**.

Lalu pilih "Return"

# Download Aplikasi TOEFL Secure Browser



 [Download Secure Browser](#) [Frequently Asked Questions](#)

Username

Password

[Login](#) [Forgot Your Password?](#)

## The TOEFL® Family of Assessments



### The TOEFL ITP® Tests

For English-language-learning programs at the university level (ages 16+)



### The TOEFL Junior® Tests

For middle school to early high school level English-language-learning programs (ages 11+)



### The TOEFL® Primary™ Tests

For young students, to measure current English skills and provide a foundation for future success (ages 8+)

Anda bisa Kembali ke website awal dengan menekan "Return" atau membuka Kembali [Program Workshop](#)

Kemudian klik "Download Secure Browser"

## Secure Browser for Windows

The Windows Secure Browser is a locked-down version of an internet browser that prohibits access to other applications during testing. This Secure Browser requires an installation that requires administrative privileges. Once installed, administrative privileges are not required to launch the Secure Browser.

### Download on Windows

1. Select the **Download** button located underneath these instructions.
2. Depending on your browser settings, the Secure Browser file will download in one of the following ways:
  - The file will automatically download to the default location, typically your desktop or **Downloads** folder.
  - You will be prompted to run or save the file. Select **Save**. The file will download to the default location.
3. Double-click the **Secure Browser** icon or file name to open the Secure Browser.
4. You may receive the following Security Warning: "Do you want to run this file?" Select **Run**.
5. If the Secure Browser has not been installed previously, you will be prompted that an installation is required. Click **OK**. This installation requires administrative privileges to be granted.

Download

Jika OS anda berbasis **Windows**, maka yang keluar adalah Secure Browser for Windows.

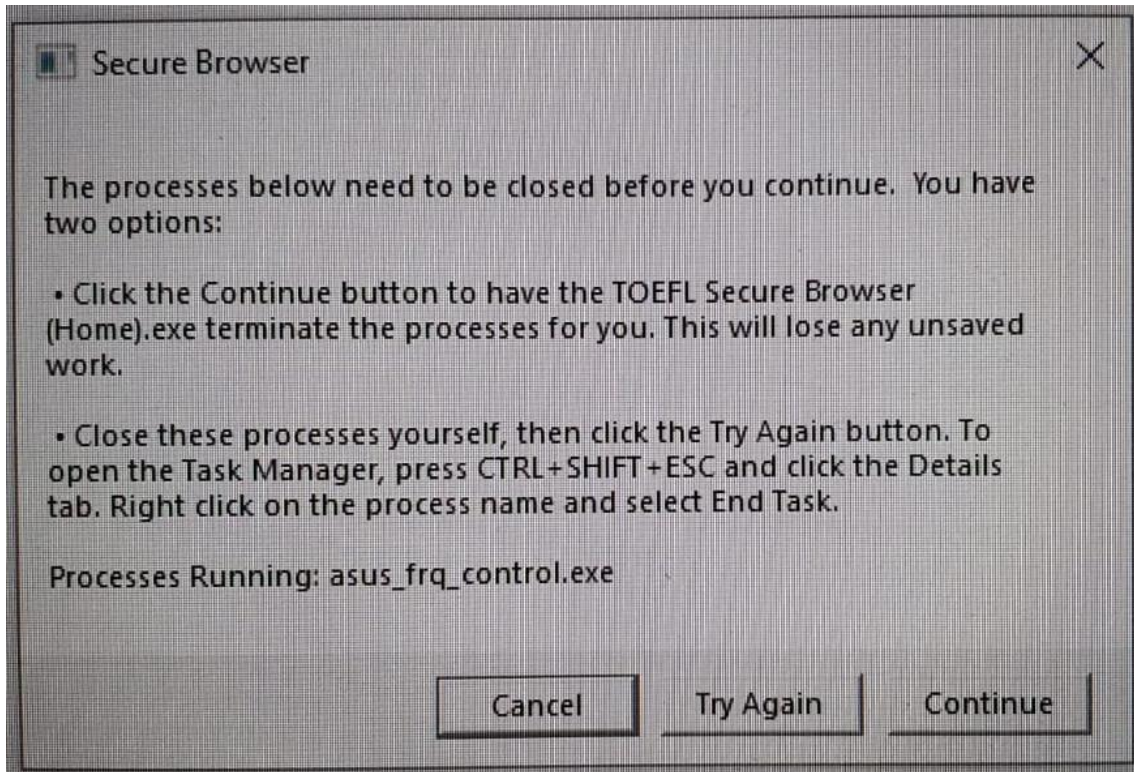
Jika OS anda berbasis **Machintos**, maka yang keluar adalah Secure Browser for Macbook.



TOEFL Secure  
Browser

Pastikan aplikasi  
**TOEFL Secure Browser**  
sudah terinstall kemudian letakkan  
icon tersebut di desktop anda.

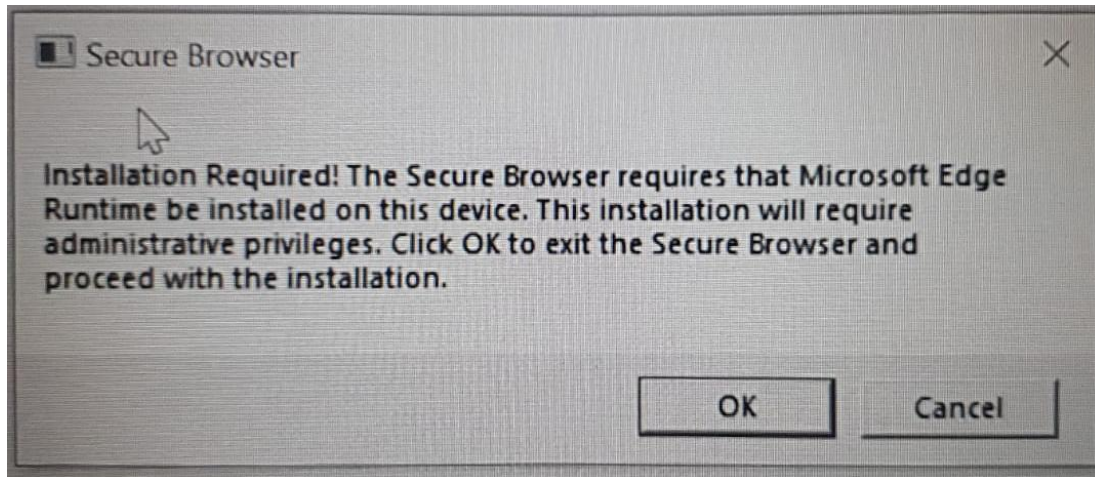
# Membuka aplikasi TOEFL Secure Browser (Case 1)



- Silahkan double klik aplikasi toefl secure browser
- Jika muncul notifikasi seperti di samping, silahkan klik "**Continue**" hingga aplikasi terbuka

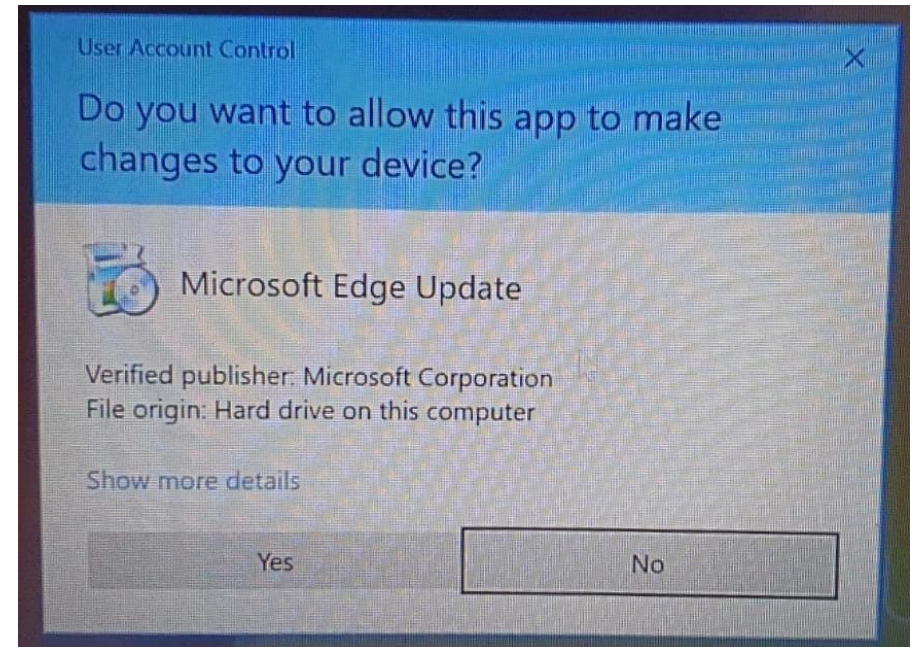
# Membuka aplikasi TOEFL Secure Browser (Case 2)

1



Double klik Toefl Secure Browser (Home)  
Jika muncul tampilan seperti ini, silahkan  
di klik "**OK**"

2



Kemudian klik **Yes**, jika ada  
notifikasi yang muncul seperti  
pada gambar.

I'm taking the test in a classroom.

Start My Classroom Test

I'm taking the test at home.

Select the button below to start your test or to check that your device can be used for at home testing.

Start My At Home Test

### The TOEFL® Family of Assessments



#### The TOEFL ITP® Tests

For English-language-learning programs at the university level (Ages 16+)



#### The TOEFL Junior® Tests

For middle school to early high school level English-language-learning programs (Ages 11+)



#### The TOEFL® Primary™ Tests

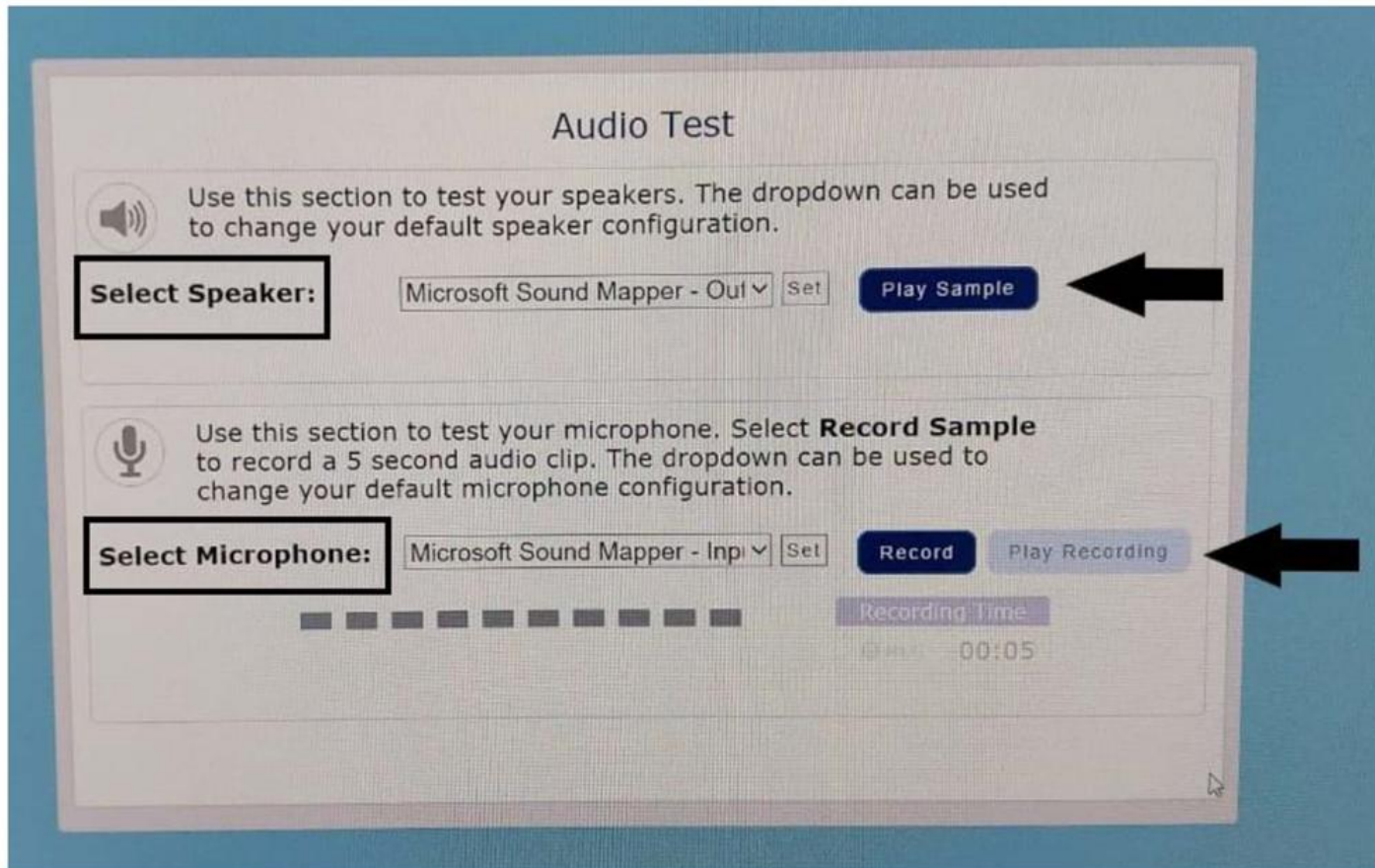
For young students, to measure current English skills and provide a foundation for future success (Ages 8+)

Check Audio and Microphone



Apabila aplikasi **TOEFL Secure Browser** berhasil terbuka. Maka tampilan akan seperti pada gambar di samping.

Kemudian klik "Check Audio and Microphone"



Silahkan ditek suara pada audio dan Microphone anda.  
Jika sudah ada suara dan anda bisa merecord suara anda dan terdengar kembali.  
Maka check readiness anda sudah berhasil.

# Jangan lupa untuk memberikan foto hasil check readiness anda kepada konsultan kami.

## 1. Hasil Run System Check

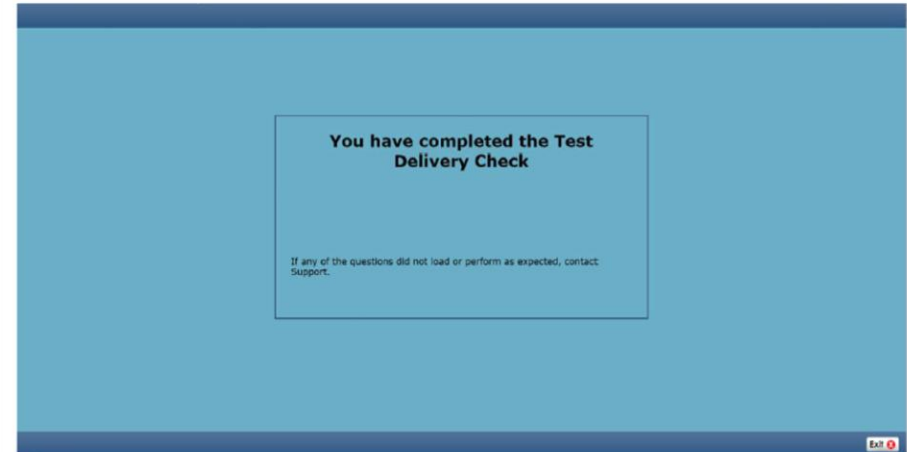


This device meets all site requirements, but may need attention. A Secure Browser may be required for delivery of the operational test. If needed, be sure to install the Secure Browser on the device prior to the test.

### Additional Information

Institution	Anonymous
wan ip Address	[REDACTED]
Date/Time of Report (Local)	04/08/2021 04:40:01 AM
Date/Time of Report (Server)	04/08/2021 04:41:09 AM
Country	ID
Display Resolution	1920 x 1080
Display Colors	24 - bit
Browser	Internet Explorer
Browser Version	11.0
Platform	Windows 10
Cookies	Supported
Compression	Supported
HTTP Latency	260 ms
User Agent String	Mozilla/5.0 (Windows NT 10.0; WOW64; Trident/7.0; rv:11.0) like Gecko
System Language	en-MY
Download Speed	2 Mbps (188 KB/s)
Upload Speed	7 Mbps (857 KB/s)
Traceroute	The traceroute could not be completed successfully. If the upload and download checks have also failed then please contact support, otherwise this should not have an impact on testing.  NOTE: The traceroute works by sending a packet of data from our server to the WANIP currently identified for this device, one hop at a time. At each hop, a response is returned so that we know the packet has successfully arrived at its destination. A common cause of this check failing is that a router has not been configured to send a response when the packet of data has been received, which could be for a variety of reasons including to increase performance.
HTTP Protocol	HTTP/1.1
Number of Checks	13
Number of Checks Passed	10
Number of Checks Warned	3

## 2. Hasil Test Delivery Check



## 3. Hasil Bandwidth Check



View History Return

### Bandwidth Check History Detail

wan ip [REDACTED]

Institution: Anonymous

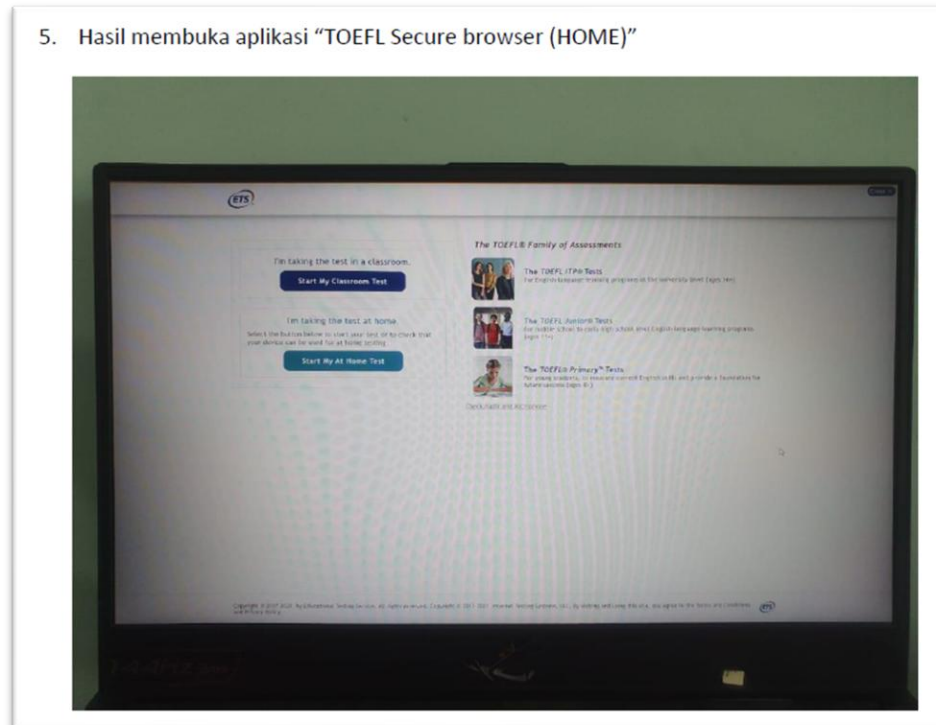
Avg Download Speed	Avg Upload Speed	Avg HTTP Latency	Max # of Hops	# of Samples	
2 Mbps (211 KB/s)	6 Mbps (782 KB/s)	274 ms	0	1	
Date	Time	Download Speed	Upload Speed	HTTP Latency	# of Hops
8/4/2021	4:48 AM	2 Mbps (211 KB/s)	6 Mbps (782 KB/s)	274 ms	0

# Jangan lupa untuk memberikan foto hasil check readiness anda kepada konsultan kami.

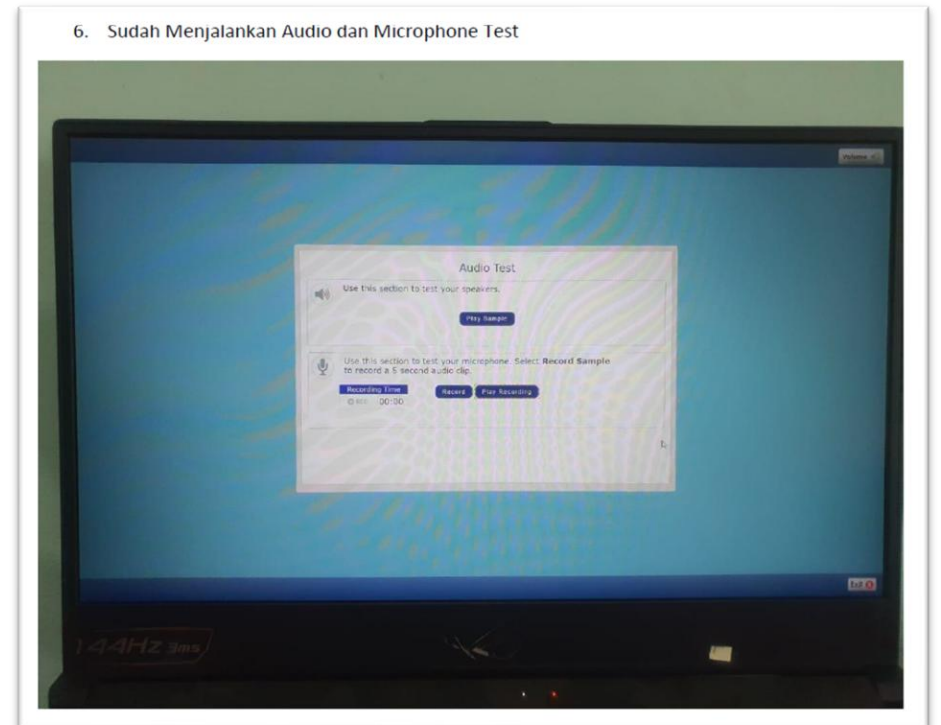
## 4. Hasil download aplikasi "TOEFL Secure Browser"



## 5. Hasil membuka aplikasi "TOEFL Secure browser (HOME)"



## 6. Sudah Menjalankan Audio dan Microphone Test





GOOD LUCK

